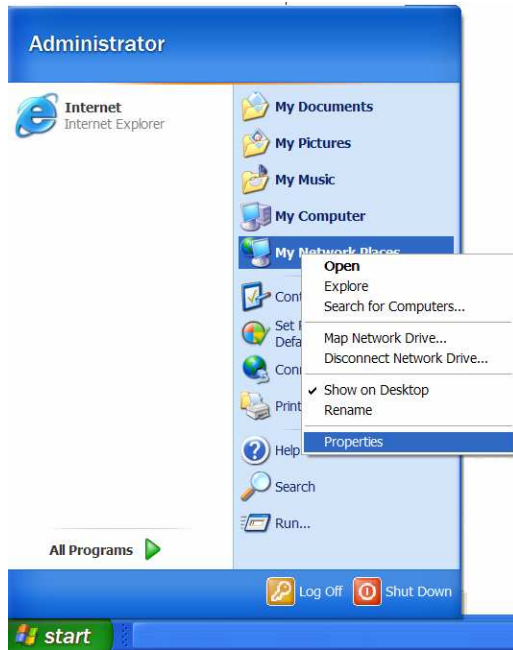
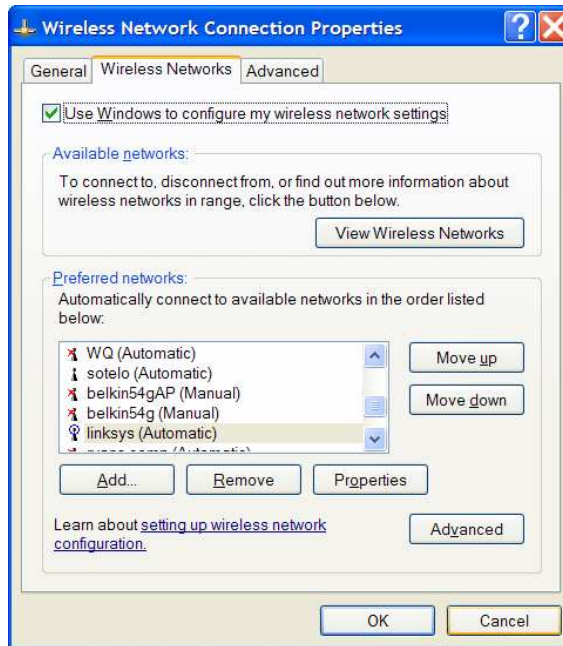


Generic Configuring wireless card via MS Windows

1. From Start menu, right-click on My Network Places and select Properties

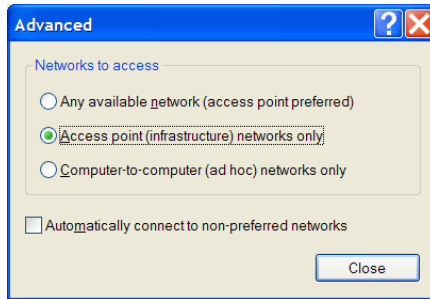


2. From "Wireless Networks" tab, select "Use Windows to configure my wireless network settings" option.



From "Advanced" tab, select "Access point (Infrastructure) network only" option.

Generic Configuring wireless card via MS Windows



3. **The SSC Wireless Network does not use WEP**, or Wired Equivalency Privacy, due to insecurities in the protocol. Disable WEP in your wireless card configuration client. This is sometimes referred to as the Wireless Network Password.
4. When in the **coverage area**, if you are able to successfully associate with the SSC network and obtain an IP address, then continue with the next step. If not, consult your card's instructions.
5. Launch a web browser. You should be presented with the wireless portal authentication page. Use your student username and password to authenticate (See FAQs)